

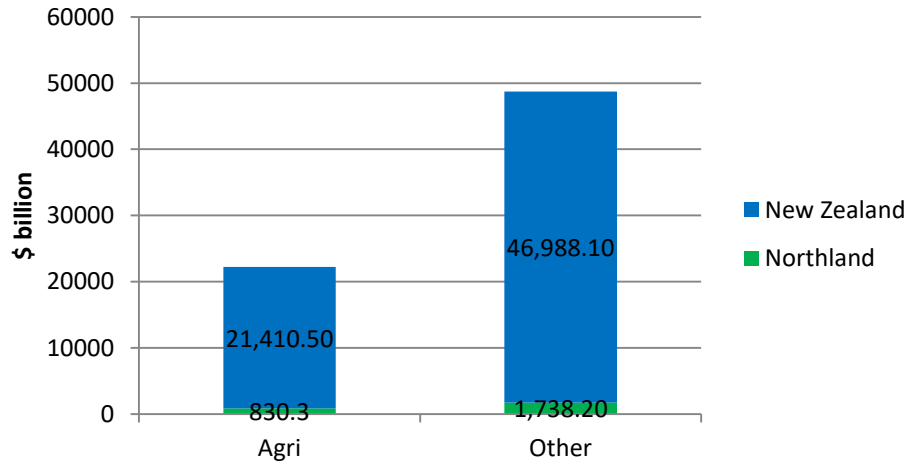
# EXTENSION 350

FARMERS LEARNING FROM FARMERS

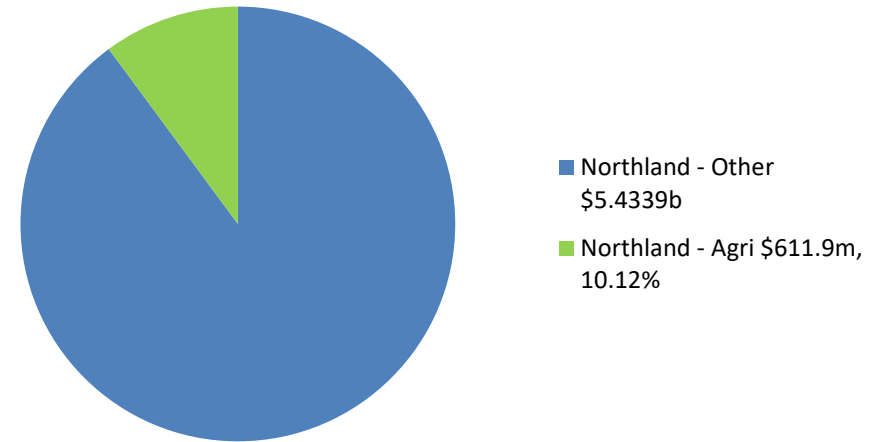


Extension 350 is a farmer-led, farmer-focussed, extension programme launched in 2016, running for 5.5 years.

**Exports Agri vs other**



**Northland GDP - Agri vs Other**



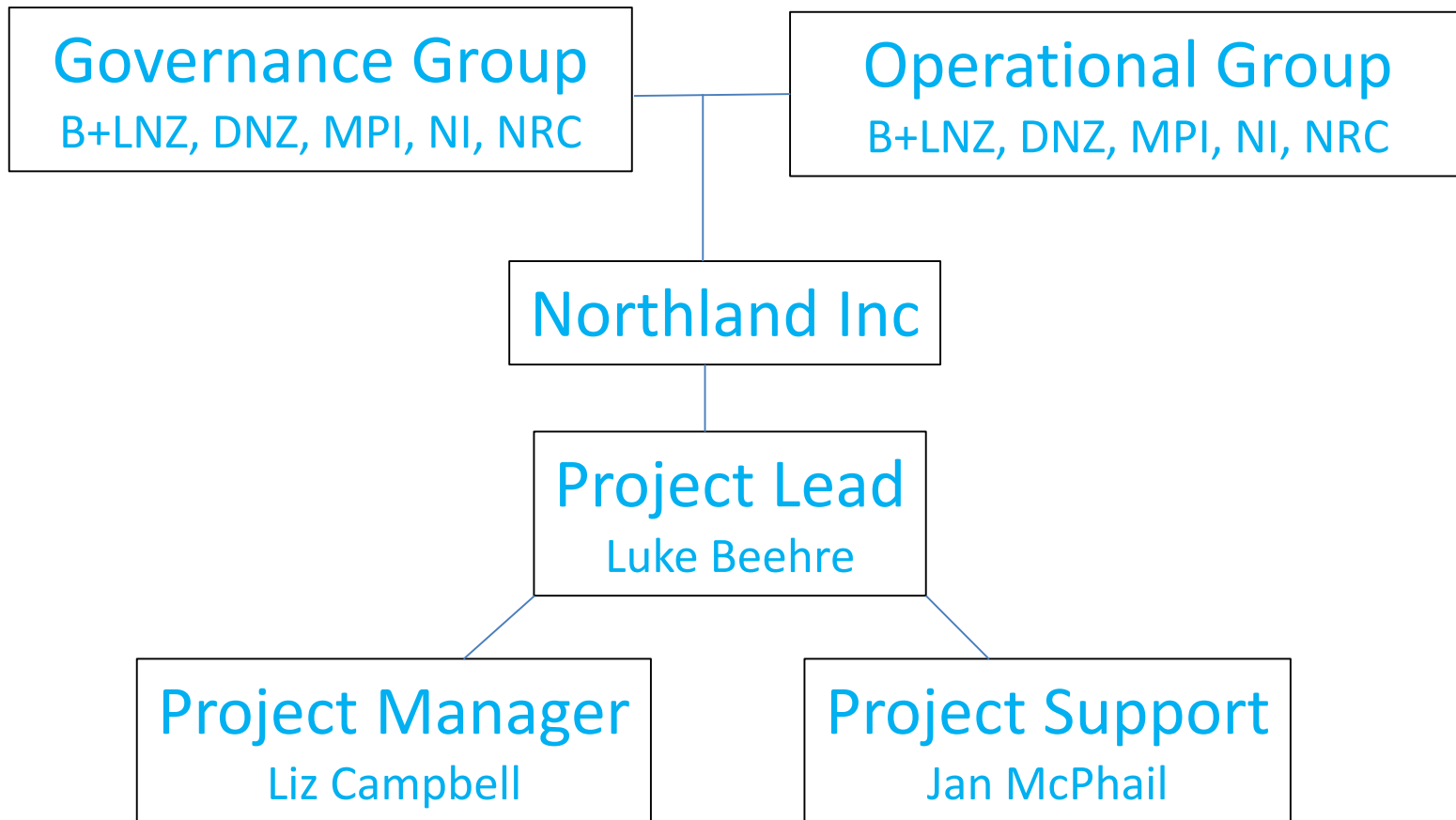
The Nimmo Bell business case estimates direct on-farm net benefits, in terms of increased profit at \$105.7 million.

Extension 350 is a farmer-led, farmer-focussed, extension programme.

Launched in 2016 our project focuses on three main planks:

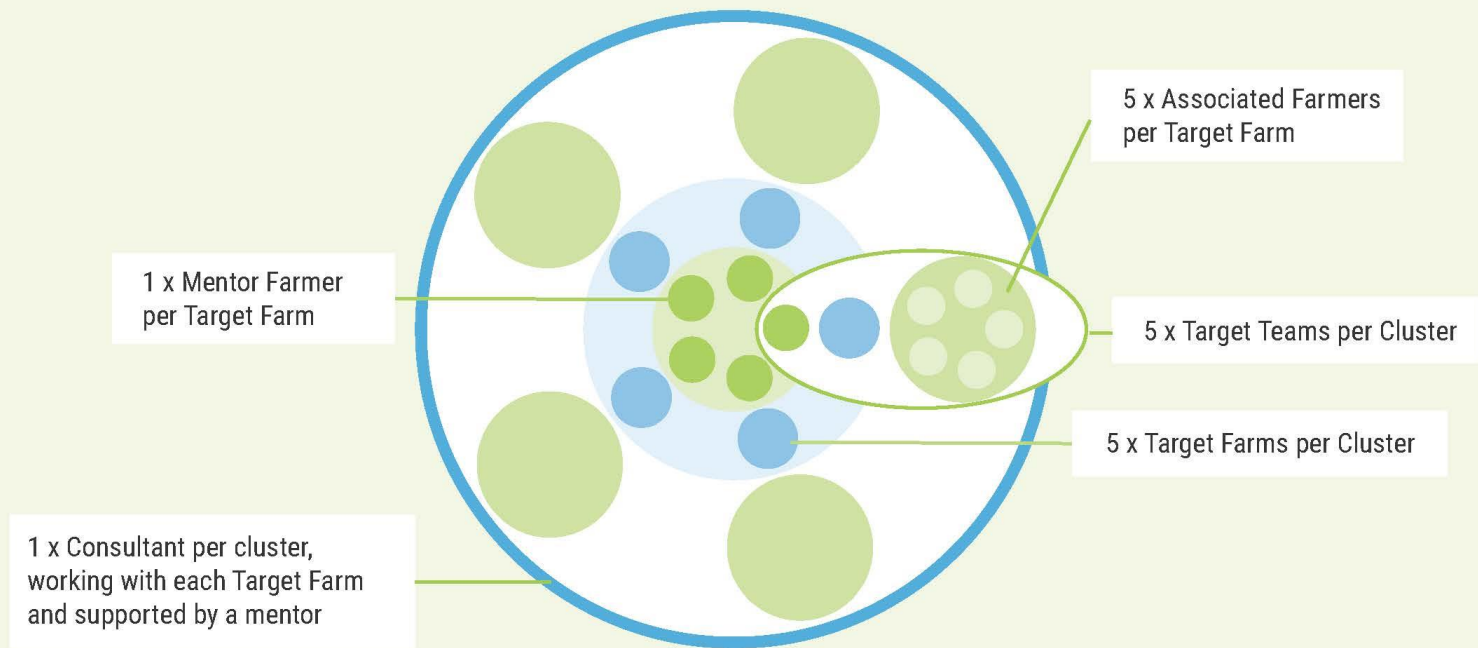
- increasing profitability;
- improving environmental sustainability; and
- improving farmer wellbeing.

This approach acknowledges that being a successful farmer is not only about economics and profitability; to achieve farming success we also need to focus on creating a sustainable environment and healthier farming community.



# EXTENSION 350

FARMERS LEARNING FROM FARMERS



# EXTENSION 350

FARMERS LEARNING FROM FARMERS



**Key:**

- Dairy Cluster
- Sheep and Beef Cluster

**Timeline:**

- Group One (2017-2020)
- Group Two (2018-2021)
- Group Three (2019-2022)



Project lead, Luke, with Target Farmer Lachie and Mentor Farmer Dave Robinson

# Extension 350, improving farming business in Northland.

## Questions?